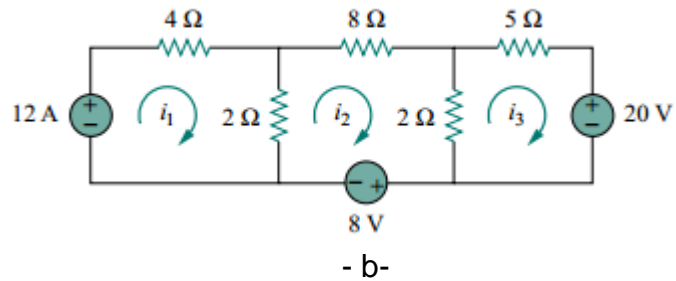
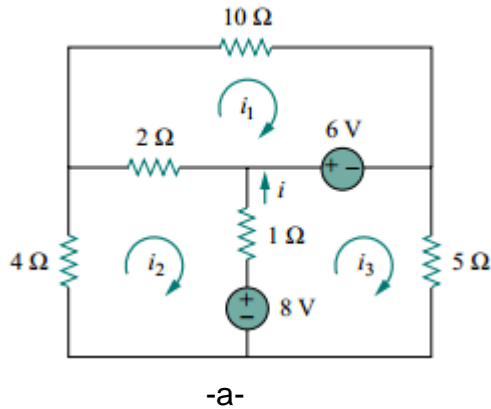
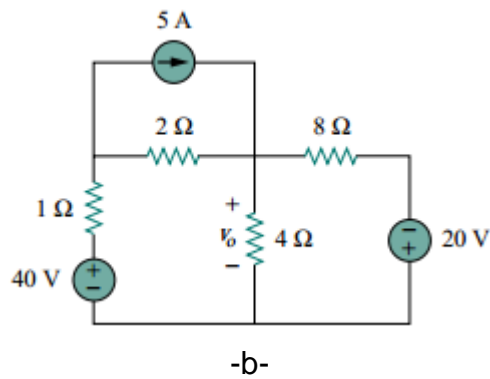
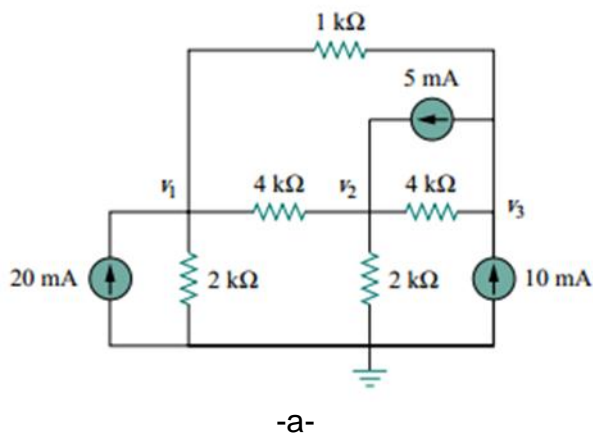


Q1) Apply mesh analysis to find I in Fig.P1.a and power dissipated in resistor 8Ω in Fig.P1.b



Q2) a) Write the node-voltage equations of the circuit and calculate the power absorbed by the $1k\text{-}\Omega$ resistor.

b) Using nodal analysis, find v_o in the circuit.



Q3) a) Determine voltages v_1 through v_3 in the circuit.

b) Use mesh analysis to determine i_1, i_2 and i_3

